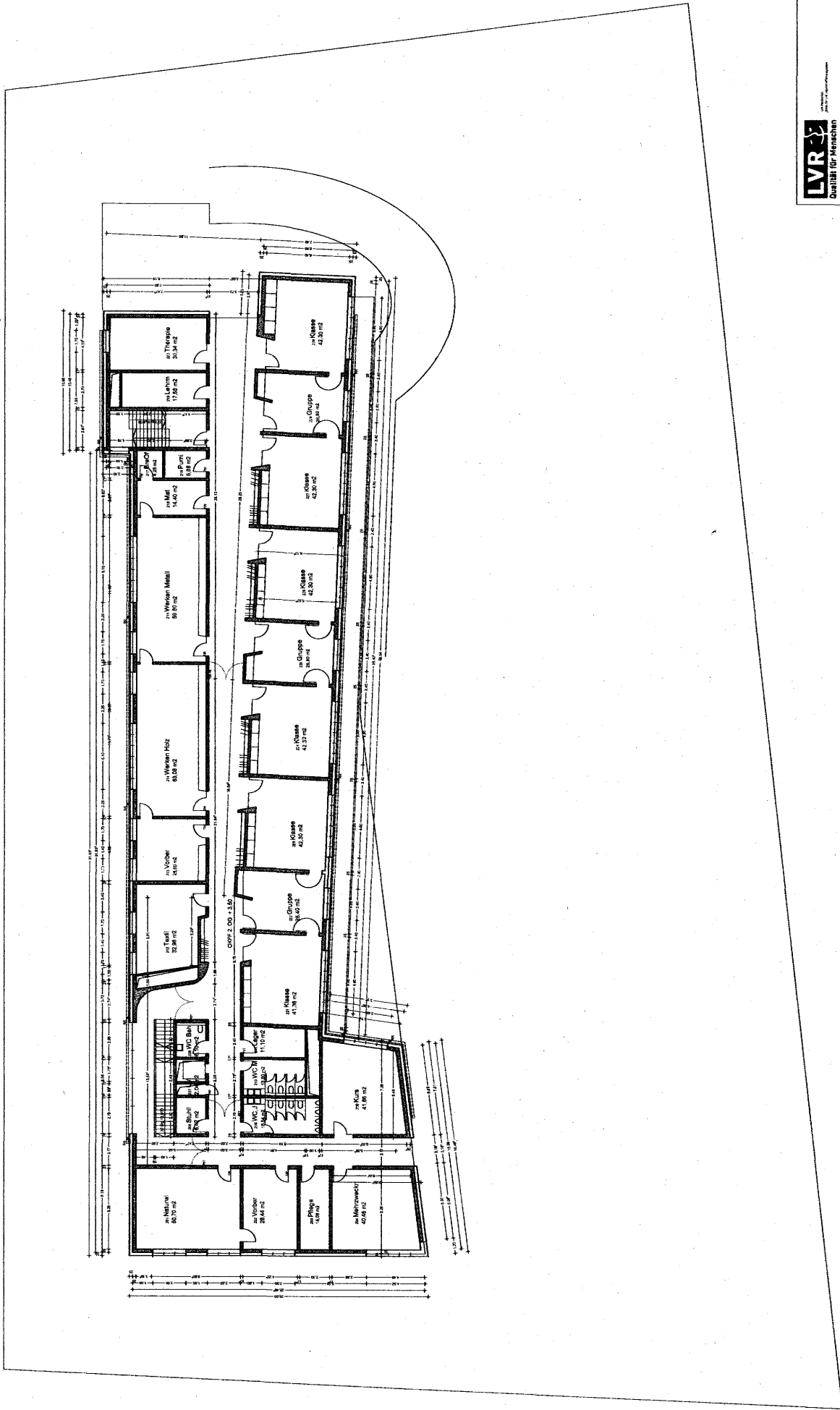
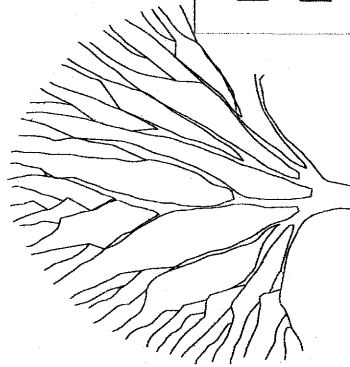
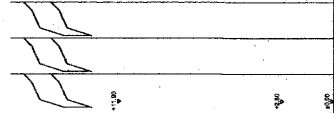
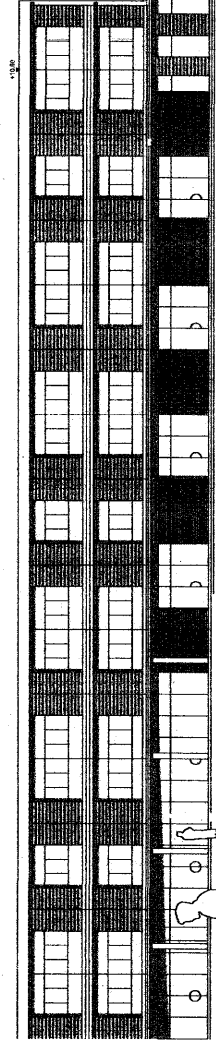
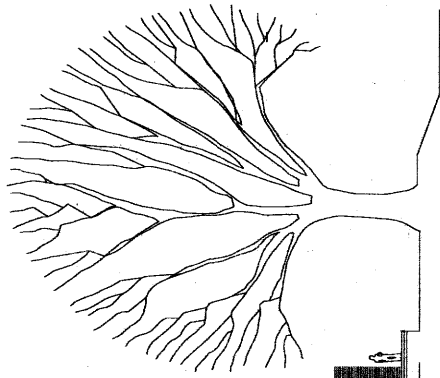


Dienst: 474
1.014.71440

Lageplan

LVR-Förderschule Körny/Bornheim
Planungsphase Entwurf/ HU-Bau
1 : 500
02.02.2011
Planung/ Architekt LVR-GLM



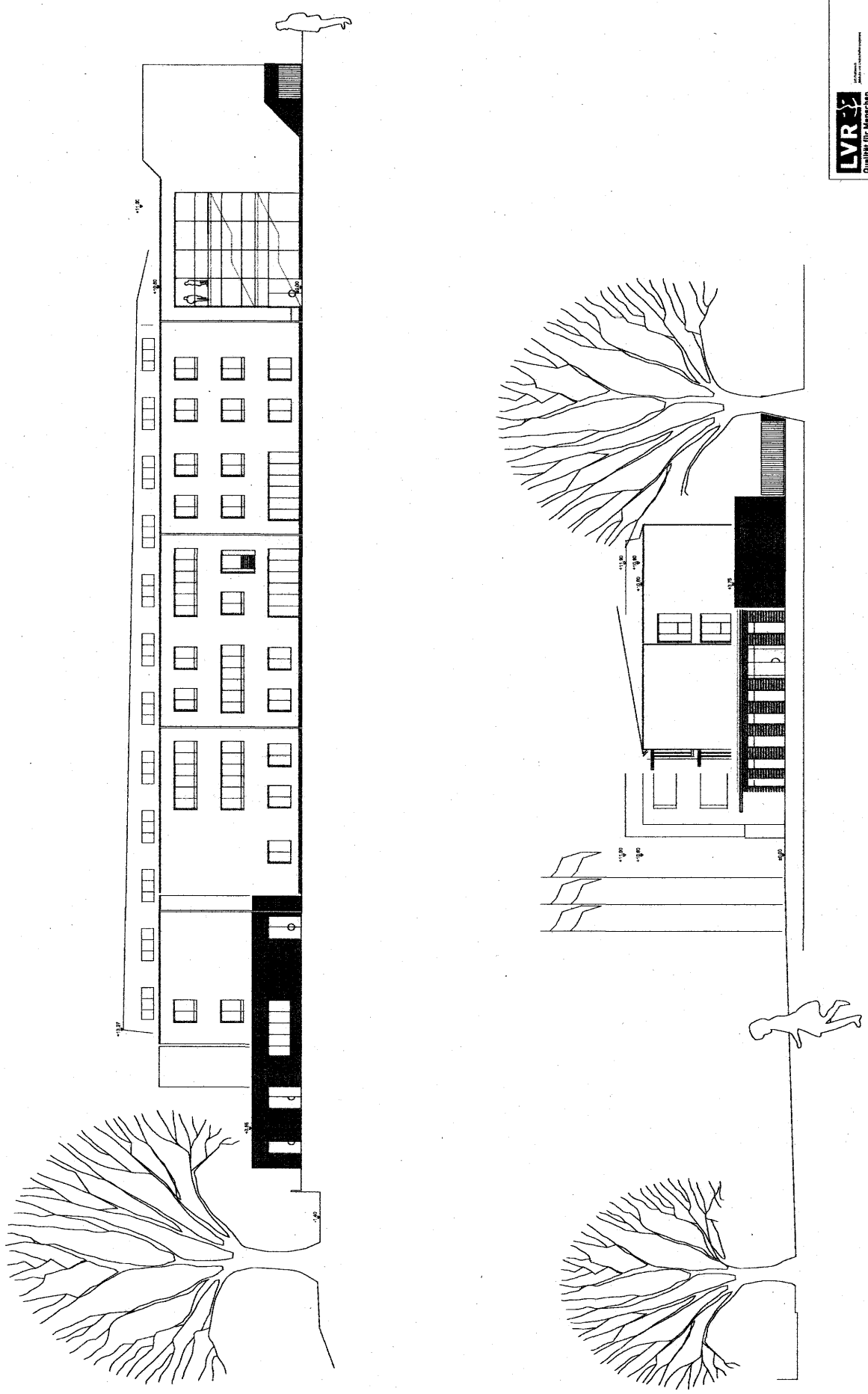


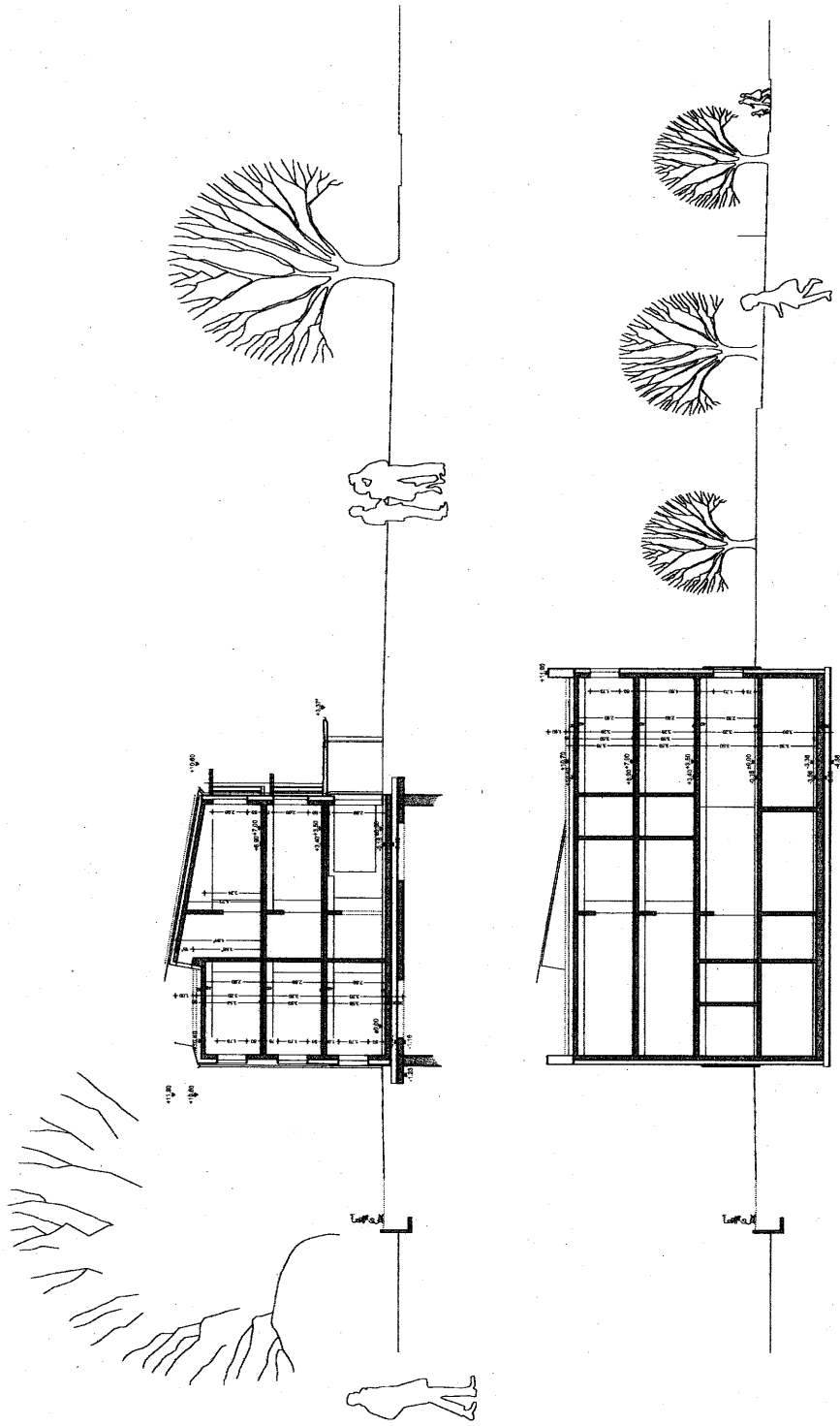
Dienst. 474
L014/7140

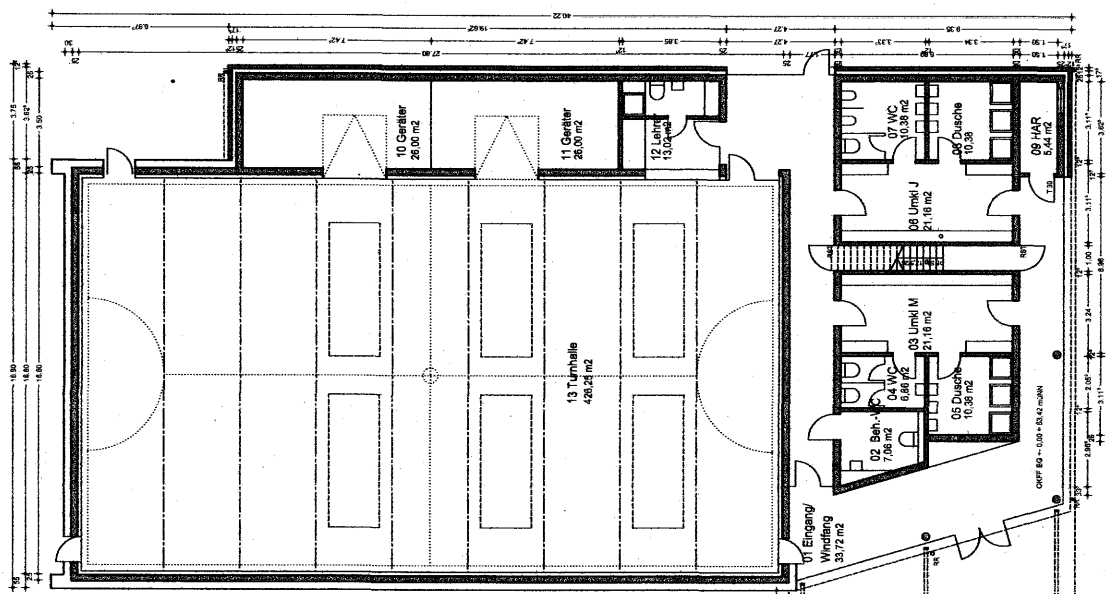
LVR-Forschenschule Köln/ Bornheim

Ansicht Westen, Süden

Planungsphase Entwurf/ Hütten
1 : 100
17.12.2010
Planung/Architect LVR-GH



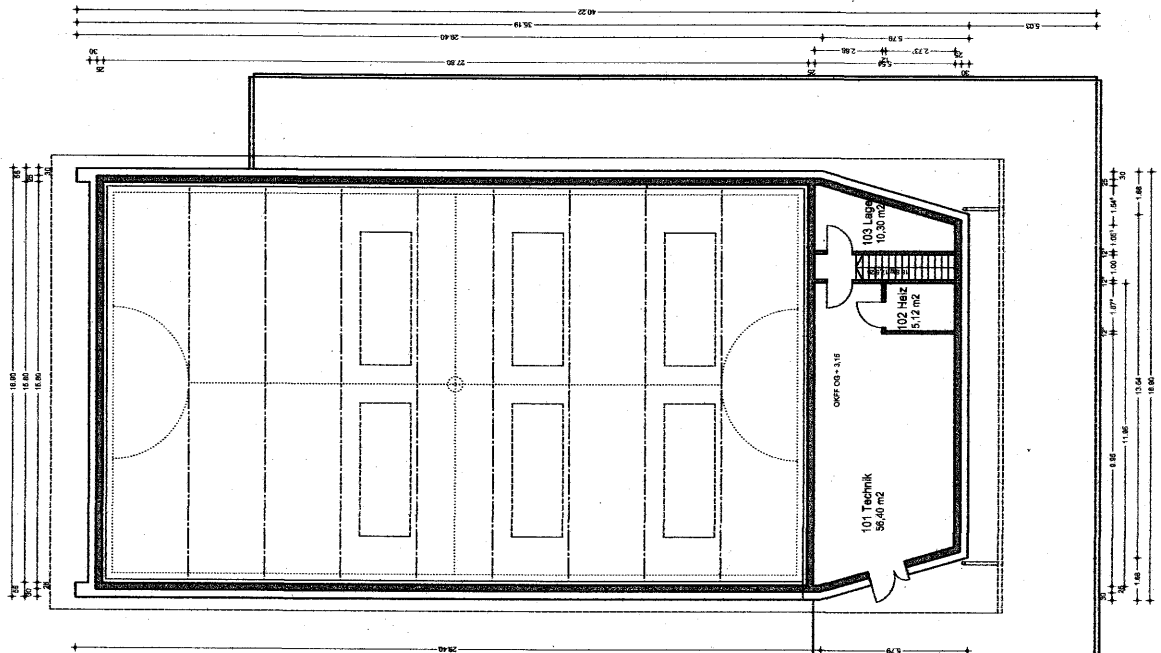




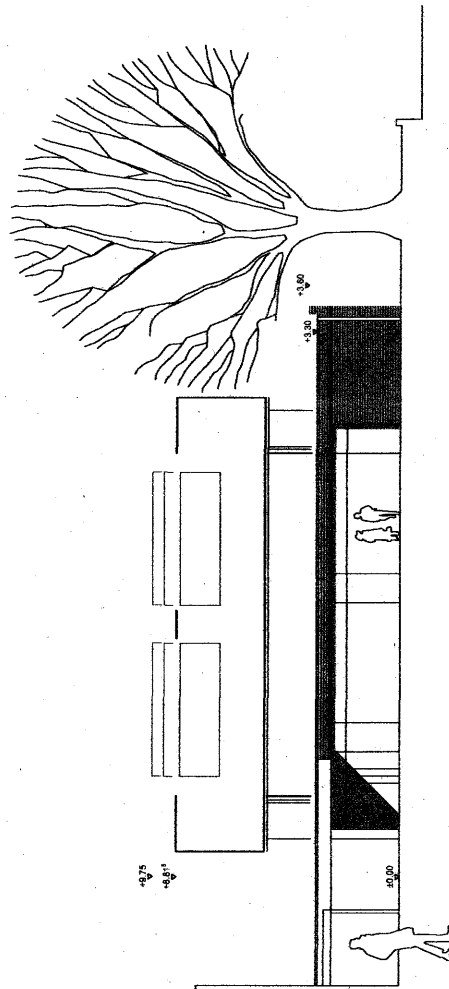
LVR-Förderschule Köln/ Bornheim
 Dienstst. 474
 1.014.71.440

Erdgeschoss Turnhalle

Planungsphase Entwurf/ HU-Bau
 1 : 100
 17.12.2010
 Planung/ Architekt LVR-GLM



LVR-Förderschule Köln/ Bornheim	Dienst: 474
	1.014.71.440
Obergeschoss Turnhalle	
Planungsphase Entwurf/ HU-Bau	1 : 100
Planung/ Architekt LVR-GUM	17.12.2010



LVR-Förderschule Köln/ Bornheim

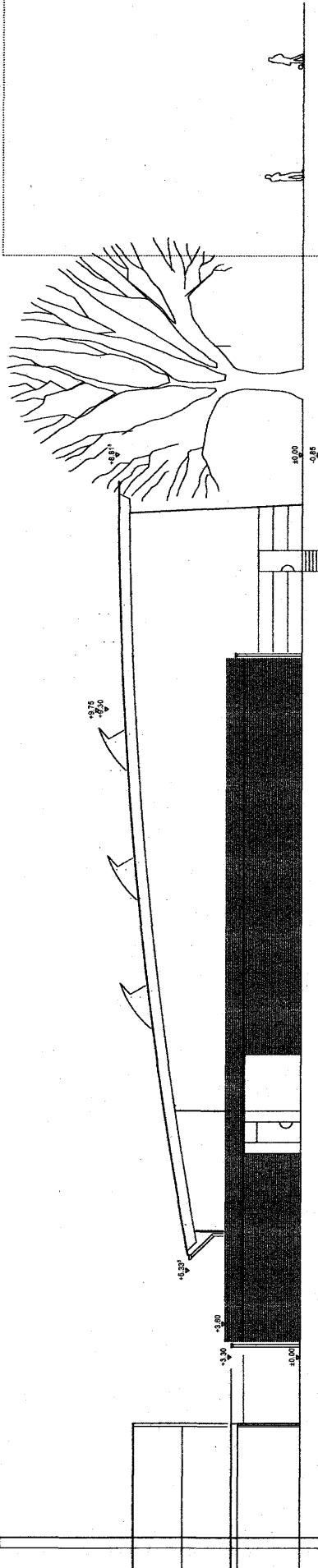
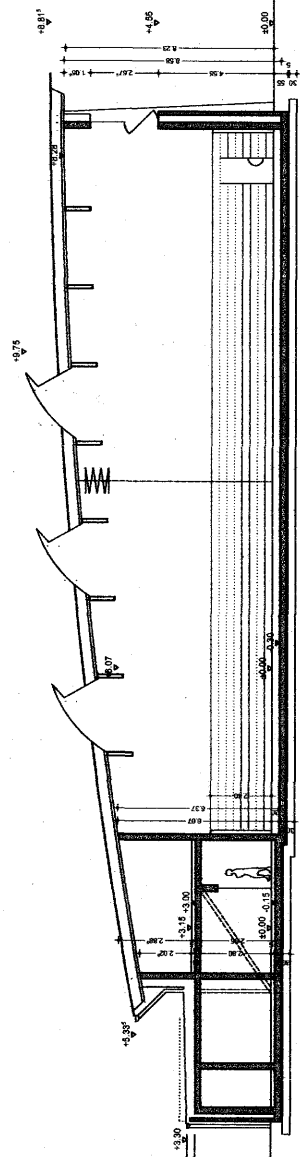
Dienst. 474
1.014.71.440

Turnhalle Ansicht Süden

Planungsphase Entwurf/ HU-Bau 1 : 100

17.12.2010

Planung/ Architekt LVR-GHM



Dienst: 474

I.014.71.440

LVR-Förderschule Köln/ Bornheim

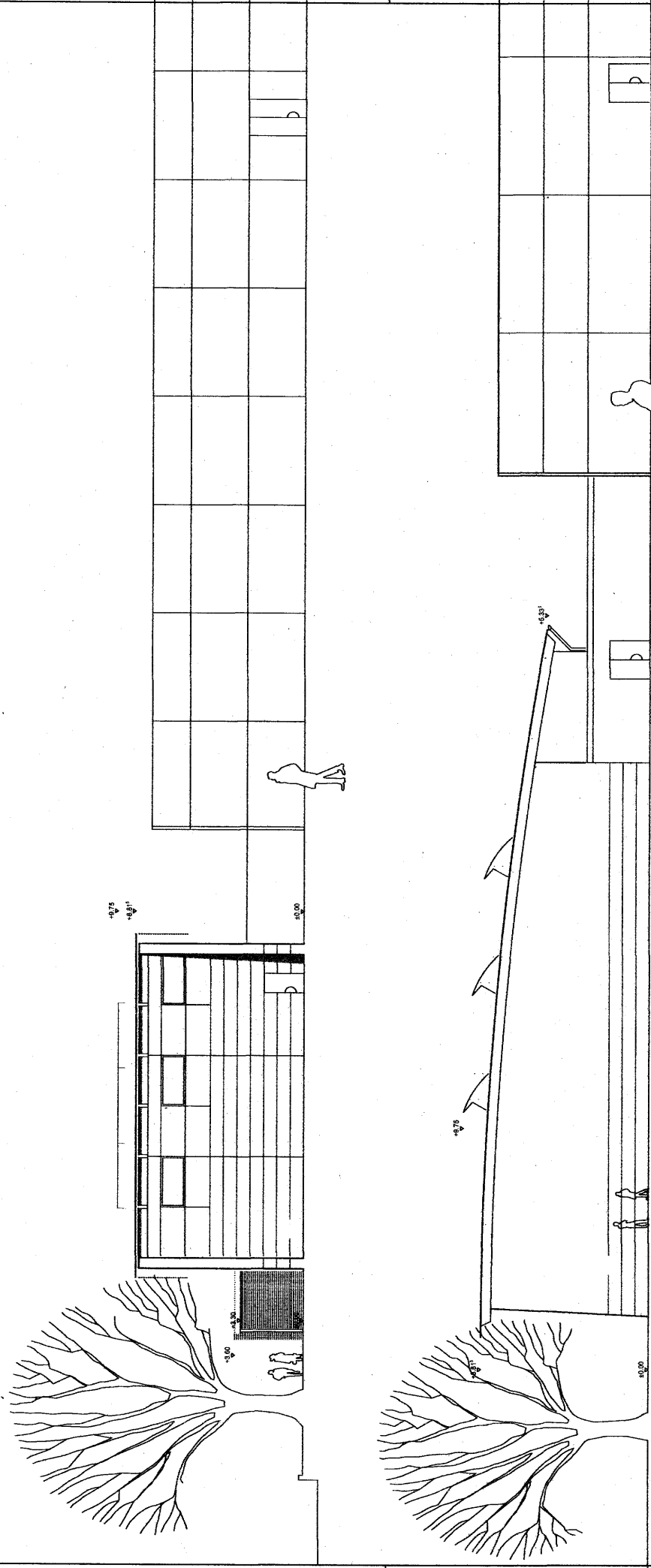
Turnhalle, Schnitt A-A, Ansicht Osten

Planungsphase Entwurf/ HU-Bau

1:100

17.12.2010

Planung/ Architekt LVR-GLM



LVR-Förderschule Köln/ Bornheim		Dienst. 474
		I.014.71440
Turnhalle, Ansicht Norden, Westen		
Planungsphase Entwurf/ HU-Bau	1 : 100	17.12.2010
Planung/ Architekt LVR-GUM		